



# Aajeevika

## Jharkhand

Issue- 131



## Nasha Mukti Abhiyan: Campaign against drug abuse and illicit trafficking in Jharkhand...



### SHG women proactively participated to combat drug abuse and illicit trafficking

Jharkhand witnessed an intensive effort against drug abuse and illicit trafficking, spearheaded by Self-Help Group (SHG) women from diverse communities from June 19 to 26, 2024. The initiative aimed at confronting the growing challenges posed by substance abuse through various awareness activities. SHG members initiated the campaign with oath-taking ceremonies, where community members pledged to reject drugs and uphold a drug-free environment. SHG women organized vibrant awareness rallies, marching through neighbourhoods with banners and placards advocating against drug abuse. They also facilitated group meetings, engaging youth and adults in discussions about the harmful effects of drugs and emphasizing prevention strategies. Creative activities

solidarity in the fight against substance abuse. By engaging directly with local communities and leveraging cultural forms such as rangoli and Nukkad Natak, SHG women effectively conveyed messages of resilience and hope. Their contributions have significantly advanced the goal of creating a drug-free society in Jharkhand.

This campaign highlighted the critical importance of grassroots initiatives led by empowered women in addressing societal challenges. It aligns with the broader national objective of achieving a Nasha Mukta Bharat (Drug-Free India), underscoring the transformative impact of community-led efforts in combating substance abuse and promoting social well-being.



## Enhancing Skills of YPs and KMC Nodals in Communication, Documentation and Photography



Palash (Jharkhand State Livelihood Promotion Society) recently concluded a six-day training program, split into two phases, aimed at enhancing effective communication, documentation, and photography skills among young professionals (YPs) and Knowledge Management & Communications (KMC) Nodals.

The participants received comprehensive orientation on the KMC domain and their roles. Deputy Secretary, RDD, GoJ Shri Rakesh Kumar engaged with the participants during the session and discussed the impact of training. Shri Bishnu C Parida, COO of Palash (JSLPS), emphasized on the pivotal role of communication and effective use of acquired skills.

Notably, about 65 participants in two batches were commended for their active engagement. This initiative underscores JSLPS's commitment to Strengthen knowledge dissemination and communication capabilities across communities-in Jharkhand.

In both the phases, one-day training session led by Shri Avinash Kumar focused on equipping participants with essential communication and story-writing skills for

community engagement. Activities included role-playing, group exercises, and interactive games to enhance proficiency. Participants learned to transform field-based experiences into compelling narratives for knowledge sharing. The programme concluded with feedback sessions and action planning, emphasizing on clear and impactful communication strategies vital for effective rural development initiatives. Diwakar Prasad, a senior photojournalist, led a comprehensive training programme aimed at enhancing photography and videography skills. Divided into theoretical and practical sessions, participants learned visual communication, photography elements, light conditions, composition principles, and camera handling techniques. Practical sessions included using Android phones or The program concluded with interactive Q&A sessions, enriching participants' abilities in both photography and videography, essential for effective documentation and communication. State KMC team was present and facilitated the training programme.



## Embracing Yoga: A community movement towards health and wellness



**Sakhi Mandal women promoted the theme 'Yoga for Self and Society' by conducting rallies, yoga sessions**

Recognizing yoga's vital role in fostering a happy and healthy life, Palash (JSLPS) organized various programs at village, cluster, and block levels across the state. These initiatives aimed to highlight the importance of yoga practice, engaging local residents, rural women from Sakhi Mandal, school students and trainees from DDUGKY and RSETI. Sakhi Mandal women promoted the theme 'Yoga for

Self and Society' by conducting rallies, yoga sessions and teaching yoga to government school students, emphasizing its daily integration for a healthier life.

Youth at DDU-GKY and RSETI training centers also embraced yoga enthusiastically, with a commitment to make it a part of their daily routine. State and district employees from Palash (JSLPS) discussed the significance of yoga and encouraged its adoption. These programs, inspired communities to pursue a healthier and more active lifestyle.



## Sewing Success: Journey to Financial Empowerment

Hanna Devi lives with her husband and mother in law at Bhandartoli village in Pakartand block of Simdega. Initially, her financial situation was not very good and was struggling to fulfill her basic needs. Hanna supported her family through sewing work.

Since 2016, she has been a member of the Gulab Aajeevika SHG. With the help of the group, she took a loan of Rs 50,000 to expand her sewing business. She bought three more sewing machines, a Picco machine, and other equipments.

Hanna also leased two acres of land for mango farming. With the support of Palash (JSLPS), her group received a power tiller. Now, she cultivates rice on 1.25 acres and is earning up to Rs 50,000 - 70,000 after keeping enough for her family's needs.

Hanna also taking benefits from the government's ambitious Didi Bagiya scheme, supplying timber plants to the block nursery annually.

Now, through her sewing business she earns Rs 25,000

### Simdega



**Through various livelihood activities, Hanna is now a Lakhpati Kisaan.**

to 30,000 every month. She earns around Rs 2 lakh annually from selling Amrapali, Mallika, and Bombay mangoes. Out of her savings she has also bought a second-hand auto for Rs two lakh and rented out for additional income.

Clearly, she has transformed herself from a simple woman to a successful entrepreneur with an annual turnover of Rs five to six lakhs from agricultural and non-agricultural activities.

## Steps towards becoming Entrepreneurs

**Latehar**



**Earns more than Rs 15,000 every month from her store**

Hailing from Balumath Block of Latehar, with limited resources and opportunities, Soni Devi

faced many challenges in her early life. She was a home maker with no source of income to support her family. In 2018, Soni joined Surajmukhi Aajiveeka Sakhi Mandal and started attending meetings and training sessions. She learnt about various livelihood opportunities and decided to take a loan of Rs 20,000 from the group. With this money, she opened a general store in her village. Soni received continuous support and guidance from JSLPS staff. With their help and support, Soni Devi stocked her store with essential goods and gradually built a loyal customer base. With her hard work and dedication, Soni Devi's general store began to flourish. Her income increased significantly, and she was able to support her family's needs. She now earns around Rs 15,000 every month from her store.

## Reena's success story of ice-cream business

Reena Devi, a member of the Durga Sakhi Mandal, lives in Satbarwa Block of Palamu. Reena was busy in household chores.

In 2011-12, someone took her house on rent and installed a malai barfi-making machine. Reena started working on the machine as a labourer. But, in 2017, she took a loan from her SHG to open a factory for making ice cream and ice slabs.

Reena and her husband Umesh, started working hard every day to make ice cream and kulfi.

Now, Reena sells Rs 4,000 to 5,000 pieces of ice creams daily earning a profit of Rs 1 per piece. Later, she also started making ice slabs, producing 45 to 50 slabs daily. She sells 50-kilogram slabs for Rs 500 and 30-kilogram slabs for Rs 300

**Palamu**



**Earns more than Rs 50,000 every month by selling ice cream, ice slabs and packaged drinking water**

Now, Reena has started selling water jars. During summer, she sold more than 200 jars everyday at the rate of Rs 30 per jar. On an average, she sells 50 to 55 jars daily.

Reena is now a successful entrepreneur, earning a good income up to 50,000 in a month and supporting her family independently.

## Community institutions: empowering women, transforming lives...

**Ranchi**



**Renu Devi has employed five SHG women at the Didi café and earns a monthly income of nearly Rs 40,000**

Renu Devi, the owner of Aajeevika Didi Café at Vikas Bhawan in Ranchi, is an example of transformation and empowerment fostered by the Deendayal Antyodaya Yojana-National Rural Livelihoods Mission (DAY-NRLM).

A member of the Maa Lakshmi Mahila Samuh at Ratu, Renu Devi joined the Self-Help Group (SHG) in 2017. Before that, she was a homemaker and her husband used to work as an autorickshaw driver. They have two sons. The SHG provided Renu a platform to learn the importance of saving and ignited her desire to contribute financially to her family. She quickly

became an active member of the group, serving as the SHG Secretary (Adhyaksh) and a Book Keeper.

In 2021, Renu Devi got to know about the opportunity to open a Didi Café at Vikas Bhawan. Renu took advantage of the opportunity and secured a loan of Rs 1 lakh through Bank Linkage, a program supported by her community institutions and the Palash (JSLPS).

In 2024, the Aajeevika Didi Café was inaugurated by Deputy Development Commissioner of Ranchi. The journey, however, was not without challenges. Lacking prior experience in running a café, Renu faced significant criticism from customers in the beginning. She, however, dedicated herself to improve her cooking skills and managing the café efficiently. Her perseverance paid off, and today, Aajeevika Didi Café is a thriving establishment.

Renu has employed five SHG Women at the café and earns a monthly income of Rs 30,000 to 40,000 after cutting down all the expenses. This financial stability has not only empowered her but has also contributed significantly to her family's well-being. The success of the café has brought her immense joy and satisfaction, symbolizing her journey from financial dependency to self-reliance and empowerment.

## Phulo Jhano Ashirwad Abhiyan: A boon to respectable livelihood...

Shanti Devi, a resident of Govindpur Kala village under Bishnugarh Block in Hazaribagh, was earlier involved in selling country made liquor to earn a living due to tough times faced by her family. During 2020 to 2022, she had to face confrontations with drunken customers every day resulting into frequent arguments, abuses and even threats from her husband. It further led to significant distress for her and her family.

Seeking help, Shanti Devi approached her village's Rachna Aajeevika Swayam Sahayata Samuh and shared her problems. She was informed about the Phulo Jhano Aashirwaad Abhiyan, under which she could receive interest-free financial assistance of Rs 10,000. Motivated by this opportunity, Shanti Devi decided to quit brewing and selling of Handiya and open a cosmetic store instead. The store has provided her with a steady income further improving her social and economic status significantly. Today, she earns nearly Rs. 8,000 per month and is satisfied with her new business. She is considering expanding it in the future.

**Hazaribagh**



**Once a handia seller, now Shanti Devi owns a cosmetic store**

## Pinki Devi: Transforming future with resilience and determination

### Koderma



Once living a miserable life, Pinki is now a Lakhpati Didi.

Pinki Devi, a resident of Nawadih village in Koderma, was living a miserable life with her family of three. Due to poverty, even their basic needs were not met. In August 2021, after joining the Chameli Aajeevika Sakhi Mandal, Pinki Devi gained knowledge about various livelihood opportunities. With the help of a CCL loan of Rs 50,000 from the group, she improved her financial condition and started a ration shop.

This shop has brought some economic stability to her family, improving their overall living conditions. After joining the group and receiving the loan, Pinki not only started a ration shop but also took up farming. She learnt modern farming techniques through the group, which helped her further increase her income. Consequently, her financial situation improved significantly. For Pinki Devi, stepping out of her house and village was a challenge. However, after joining the group, she received support from her family to go out for work. She also got the opportunity to work as the secretary of the group, which not just improved her economic status but boosted her confidence too. Today, she is running her own business (ration shop) successfully which has helped her become a Lakhpati Didi by summing up her annual income up to Rs 1,00,000 to 1,20,000. Pinki Devi aims to further expand her livelihood by continuing her ration shop and farming activities. She wishes to increase her income and improve her financial condition further.

## Rural women traversing path of success through community based institutions...

Soni Devi, a 30-year-old resident of Salgi Lalu Toli in Lohardaga, had been facing severe financial hardships before joining the Radha Mahila Mandal. Her family struggled a lot and she was unable to provide her children with good education.

In 2014, a representative from JSLPS's Shankhdhara Mahila Vikas Mandal visited her village and introduced her to the benefits of Self-Help Groups (SHGs). Motivated by it, Soni joined the Radha Mahila Mandal and began saving Rs 20 on monthly basis. She soon learnt about the availability of loans for livelihood enhancement and took a loan of Rs.20,000 to buy five goats. Her income started growing, prompting her to take another loan of Rs 10,000 to purchase three more goats. Over the time, her goat-rearing business flourished, and she expanded her herd to 35 goats.

Now, Soni Devi earns an income of Rs.1,00,000 annually through goat rearing business. This transformation not only improved her income but also allowed her to enroll her children in good schools, ensuring a better future for them. Joining the SHG and successfully managing her business boosted Soni's confidence, enabling her to actively participate in SHG activities and inspire other women in her village to explore similar opportunities.

### Lohardaga



Soni Devi expanded her goat rearing business through SHG loans; owns a herd of 35 goats

## Clementina attains success and sustainability through farming

**Dumka**



**She has been growing chilli, okra, beans, and pumpkin, making a profit of Rs 50,000 every year**

Clementina Hansda, from Jaradih village in Dumka sadar has written her destiny with dedication and hard work. In 2000, Clementina married but they had no economic stability and they were struggling financially. Being from a rural area, her in-laws restricted her from going out or participating in social activities.

After a few years, Palash (JSLPS) formed self-help groups in her village. In 2018, Clementina talked to her

neighbouring women and formed Sagun Aajeevika Sakhi Mandal. They held weekly meetings at their homes. Despite having land, they were not doing farming.

JSLPS introduced drip irrigation to them which uses less water and labour. They received training on this method and set up a vermicompost bed and drip irrigation system on their land. Clementina took a loan of Rs 10,000 from the SHG to install a bore-well. In the first year, she planted bitter gourd and chilli, earning a net profit of Rs 42,000.

Now, Clementina has been growing chilli, okra, beans, and pumpkin. She sells chilli for Rs 100 per Kg, okra for Rs 40 per Kg and beans for Rs 40 per Kg. Now, Clementina and her family live happily and have gained a unique societal identity.

## RSETI gives a new dimension to Kiran's life

Kiran Jha, a resident of Nala block in Jamtara, transformed her life through training from RSETI. She learnt to make food products like pickles and papad to kick start her self-employment journey. With a loan of Rs 50,000 from her group, Radha Krishna Aajeevika Sakhi Mandal, Kiran started manufacturing and selling these items in her village, where they became very popular. Today, she has expanded her business by involving other women and making more than Rs 1, 20,000 annually. Inspired by the DDU-GKY project introduced by her Sakhi Madal, Kiran also got her son trained, who is earning a monthly salary of Rs 18,000 after securing a placement. Kiran Devi's success has significantly improved her household's financial condition and set a motivational example for other women in her village. Her journey showcases the power of self-employment and community support in fostering economic empowerment.

**Jamtara**



**Became self-reliant through papad and pickle business.**

## A Harvest of Hope: Journey from Poverty to Prosperity...

### Ranchi



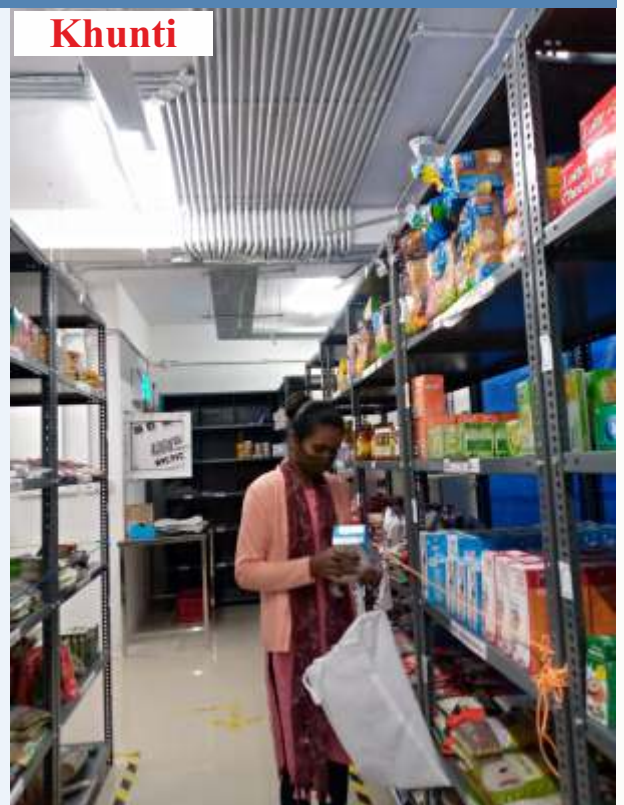
Choti Devi, a resilient woman from Taape village in Ranchi, has become a beacon of hope in her community through her transformative journey. Living with her husband, two children, father-in-law, and brother-in-law, Choti and her husband struggled to meet the family's needs through their farming on a small 25-decimal plot. The meager earnings were insufficient, causing her great worry. In 2015, she joined the SHG, Jagriti Sushma Mahila Samiti,

which opened her eyes to the possibility of breaking the cycle of poverty. In 2020, with support from her SHG and Aajeevika Krishak Sakhi, Choti became the first female farmer in her village to adopt the JHIMDI project and its innovative drip irrigation techniques. This change revolutionized her farming, allowing her to harvest crops four times a year instead of twice, with significantly lower investments and higher profits. Choti's success has been remarkable. She earns Rs. 45,000 from winter watermelons and Rs. 20,000 from rainy season beans. Her profits enabled her to expand her land to a full acre and build a new house. As a result, she has provided her family with stability, enrolling her children in private schools and securing their future. In future she aims to open a ration shop, further securing her family's financial stability and contributing to the well-being of her community.

## Empowering rural youths through DDU-GKY...

Anjani Tirkey is from Jagu, Raisimla in Torpa Block of Khunti. Her father is a farmer, and her mother is a homemaker. Initially, the family's income was too low for a six-member family. Anjani learnt about the DDU-GKY programme through a Job Resource Person (JRP). She joined the Warehouse Binner training at Qness Corp Limited in Ranchi. Anjani was self-motivated and eager to learn during her training. She always asked job-oriented questions and motivated her peers. The duration of training was a learning period for her. After completing her training, Anjani got a job at OLA Kitchen Private Limited at Film City, Hyderabad, as an Associate. Her starting salary was Rs 13,211 per month and is still working there. Anjani gives credit to the DDU-GKY program for transforming her life and said, "DDU-GKY completely changed my life. before the training I felt bad looking at my parents work hard. The financial situation at the home motivated me to join the program. I got a job and started supporting my family financially. I am very happy to see my growth."

### Khunti



Anjani is now working as an associate in Film City in Hyderabad

## Sandhya Kisku's journey from 'hadia' seller to livestock farming

**Pakur**



**Now, she is making up to Rs 1 lakh annually and providing a better life to her family**

Sandhya Kisku, a resident of Hiranpur Block in Pakur, transformed her life by joining the Phulo Jhano Ashirwad Abhiyan. Previously compelled to

sell 'hadia' (country made liquor), Sandhya's fortune changed after she joined the Champa Chameli Sakhi Mandal. With an interest-free loan of Rs 25,000, she began rearing goats and ducks. Through her dedication and hard work, she now earns nearly Rs 1 lakh annually and is providing a better life to her family. Sandhya's success story has inspired other women in her community to seek similar opportunities for self-improvement and economic independence.

"By shifting from liquor sales to livestock farming, I have not only uplifted my family's standard of living but also found a dignified and sustainable source of income," says Sandhya Kisku.

## A journey from financial hardships to attaining self-reliance through DDU-GKY...

**YP Column**

Champa Kumari, hailing from Chandankiyari Block in Bokaro, struggled with her family's humble financial situation. Agriculture being a sole source of livelihood, her family never had a stable income. Motivated by a Job Resource Person (JRP), Champa sought to create her own identity and support her family financially. She got enrolled in a General Duty Assistant (GDA) Advanced Course at Healers Arc Resources Pvt. Ltd at Kamre near Ranchi under the DDU-GKY project. After completing the training, Champa received certification from the Healthcare Sector Skill Council through Palash (JSLPS) and secured a position as a General Duty Assistant at Apollo Hospital in Bengaluru. With an income of Rs 11,000 per month, Champa is now the primary breadwinner for her family, bringing joy and pride to her parents. With job offers from different other

**Bokaro**



**Working as a general duty assistant at a hospital in Bagaluru, Champa is now the primary breadwinner for her family**

places, Champa now enjoys a happy and secured life, crediting DDU-GKY for her transformation. "We had many ups and downs due to poor financial conditions, but today, through DDU-GKY, our life has turned in the right direction. I feel very proud to stand on my own feet today" said Champa Kumari.

**-Tanvee Kadam**

# The Inspiring Journey of Madhuri Devi: From Isolation to Community Leader

## YP Column

**Hazaribagh**



Madhuri Devi, a resident of Kanchanpur village in the Hazaribagh district, exemplifies transformation and resilience. Her early life in Kanchanpur was marked by seclusion. She lived a life confined within the walls of her home, barely interacting with others. This isolation was not by choice but a result of limited opportunities and social constraints. With two children, a son and a daughter, Madhuri's responsibilities were primarily domestic, and her world was limited to her immediate family. In 2016, Madhuri Devi took a bold step by joining the Tulsi Swayam Sahayta Samuh. Initially, her role was modest, but it was the beginning of a significant transformation. Through the SHG, she began to learn new skills and gain knowledge about financial management and community engagement. Madhuri's dedication and hard work did not go unnoticed. She was elected as the Secretary of the SHG, a role that required her to step out of her comfort zone and engage actively with other members. Her leadership qualities shone through, and in 2018, she was elected as the President of the Kanchanpur Sankul Stariya Prathmik Swalambi Sahakari Samiti Limited. This position came with greater responsibilities and the opportunity to make a more significant impact. As the President of the CLF, Madhuri had to manage funds allocated to the federation. She took this responsibility seriously and learned the intricacies of financial management. Under her leadership, the funds were utilized effectively, leading to various developmental projects and initiatives that benefited the community. In 2021, Madhuri Devi embraced a new role as Setu Didi, a position that involved guiding and supporting other women in the community about Food, Nutrition and Health. This role required extensive training, which

Madhuri undertook with zeal. She acquired healthcare knowledge, particularly focusing on maternal care, and shared this information with other women. Due to Madhuri's effort the construction of toilets and sewage systems, enhancing sanitation and hygiene occurred in the village. Additionally, her efforts ensured the availability of essential medical supplies and facilities in 67 Anganwadi centres in Bellargadda Panchayat, providing much-needed healthcare services to the community, especially for women and children. Madhuri's journey was not without personal challenges. During her first pregnancy, she lacked knowledge about proper medical care and precautions. This oversight resulted in her elder son having a psychiatric disability. However, Madhuri did not let this setback define her. She learned from her experiences and applied her newfound knowledge during her second pregnancy, ensuring the well-being of her daughter. The training Madhuri received as Setu Didi was pivotal. She learned about the importance of medical care, proper nutrition, and discipline during pregnancy. Her personal experiences made her a credible source of advice and support for other women. Under Madhuri's leadership, Kanchanpur has witnessed positive changes. The effective utilization of funds has led to developmental projects that improved living conditions. Her efforts have fostered a sense of unity and purpose among the women in the community, driving collective progress. Madhuri Devi's journey is far from over. She envisions a future where every woman in her community is empowered and self-reliant. Her plans include expanding the reach of the SHG and CLF and continuing to mentor and inspire other women.

**- Neha Goreti Minj**



## News-Brief



**PM Modi Engages Virtually with Certified Krishi-Sakhis:** Aajeevika Krishak Sakhis were certified as Para Extension Workers in a ceremony attended by dignitaries who applauded their outstanding fieldwork. The Honourable Prime Minister Shri Narendra Modi interacted virtually with trained and certified Krishi-Sakhis nationwide. In Ranchi also, Krishi-Sakhis watched the program at KVK, Ramkrishna Mission Ashram at Ranchi. They were acknowledged for their crucial role in rural agriculture, promoting sustainable practices and community development. The event

showed government's commitment to empowering grassroots leaders and enhancing agricultural productivity through local initiatives.

### Senior Economic Advisor Visits Palash Aajeevika

**Didi Cafe :** The Senior Economic Advisor Shri Gyan Bhushan, from the Ministry of Tourism, commended the collaborative efforts between Palash Aajeevika Didi Cafe (JSLPS) and the Institute of Hotel Management (IHM) during a recent visit. Impressed by the initiative, he praised the partnership after visiting cafes in Khunti and Ranchi. The advisor highlighted the positive impact of this collaboration on local tourism and employment, underscoring its role in fostering community-based sustainable development.



**MoU to Boost Rural Women Entrepreneurship in Food Sector:** Palash (JSLPS) and the Institute of Hotel Management Catering Technology & Applied Nutrition (IHM), Ranchi, have signed a MoU to foster entrepreneurship among rural SHG women in the food service sector. This collaboration aims to implement the "Palash Aajeevika Didi Café Food Retail Chain & Catering Services" under the 'Sectoral Cluster Development Project' sanctioned by MoRD, GoI. Palash (JSLPS), operating under RDD, GoJ, will oversee project execution, with IHM-Ranchi serving as



the Technical Service Agency (TSA). The MoU was formalized by the Joint Secretary of RDD, GoJ cum COO (Governance) of PALASH (JSLPS) Shri Awadh Narayan Prasad, and IHM Principal Dr Bhupesh Kumar.

## News-Brief

**Diversity Recruitment Drive for DDU-GKY Trained Women:** Palash (JSLPS) successfully conducted 'Diversity Recruitment Drive' for female candidates trained through the DDU-GKY program. The initiative, on behalf of M/s TATA Advanced Systems Ltd, Hyderabad, resulted in the selection of 51 candidates. These women were offered positions with TATA ASL, marking a significant step towards empowering and integrating skilled individuals into the workforce. The drive exemplified Palash's commitment to facilitating employment opportunities and promoting gender diversity in collaboration with corporate partners.



**RP training in Jamtara :** A 5-days' residential training was held for Resource Persons (RPs) in Jamtara under Project Umang. The aim was to equip RPs to educate local communities about child marriage and provide effective counseling to adolescent girls. The training focused on enhancing skills to tackle this social issue and promote awareness. Participants learned strategies to empower young girls and prevent early marriages through community engagement and support. Project Umang emphasizes empowering RPs to make a meaningful impact on child welfare in the region.

**Residential Training for CRP-EPs and BDSPs :** A 32-days' residential training for Community Resource Person-Enterprise Promotion (CRP-EP) and Business Development Support Provider (BDSP) certification was held at RSETI, Gumla. Led by RSETI Director and supported by Palash (JSLPS) team, participants from all the blocks in Gumla attended the training programme. The training included theoretical sessions by Master Trainers, Bankers, and Subject Matter Specialists, followed by hands-on field exposure. Its focus is on promoting successful rural enterprises in Gumla district, enhancing skills crucial for fostering local economic development. This initiative underscores efforts to empower community leaders and boost sustainable entrepreneurship in rural areas.



## News-Brief



### National Conference on Menstrual Health and Hygiene :

During a national conference on 'Menstrual Health and Hygiene' at Sadar Hospital, Ranchi, organized by MVM Baghima Palakot Farmer Producer Company Limited in collaboration with The Hans Foundation and Palash (JSLPS), an agreement was signed to distribute ragi laddoos to adolescent girls under the Ragi Mission. This initiative aims to supply a total of 1.5 lakh ragi laddoos per month to 10,000 girls across four districts of Jharkhand—Gumla, Lohardaga, Khunti, and Ranchi. The event highlights efforts

to improve menstrual health awareness and nutrition among young women in rural areas.

### Residential Workshop Enhances Skills for Rural Development:

A three-day residential orientation workshop focused on communication, team building, leadership, accountability, culture, ethical values, and gender mainstreaming in rural development was held in Ranchi. Dr N V Madhuri delivered a keynote on gender mainstreaming, while Dr Anish KR conducted sessions on team building, communication, leadership and accountability. The workshops, attended by about 50 participants including State Skills domain members, covered effective organizational traits, core strength retention, stress and conflict management, and issue referral skills. This initiative aims to empower rural development professionals with essential skills for effective community engagement and sustainable growth.



**Training on Aajeevika Register Application :** A two-day training session on the Aajeevika Register Application was held in Garhwa for the field level staff. The training was focused on collecting data on the engagement, production, sales, and profits of Lakhpati Didis from Sakhi Mandals involved in multiple livelihoods. Various officials from Palash (JSLPS) and representatives from Pradan Foundation attended the training programme. The objective of the training programme was to empower women and support their

economic development. The participants played a crucial role in making the training successful.



# PALASH

(JHARKHAND STATE LIVELIHOOD PROMOTION SOCIETY)

Rural Development Department, Government of Jharkhand

Itki Road, Hehal, Ranchi-834005

 [www.jslps.in](http://www.jslps.in)

 [@onlineJSLPS](https://www.facebook.com/onlineJSLPS)

 [@online.JSLPS](https://www.instagram.com/online.JSLPS)

 [@JSLPSlive](https://www.youtube.com/@JSLPSlive)

Editor  
**Jyoti Rani Kumar**

Contributors  
**Aditi | Shreya**

For any feedback or Suggestion email us at :  [kmc.jslps2020@gmail.com](mailto:kmc.jslps2020@gmail.com) |  0651-2951915/ 2951916